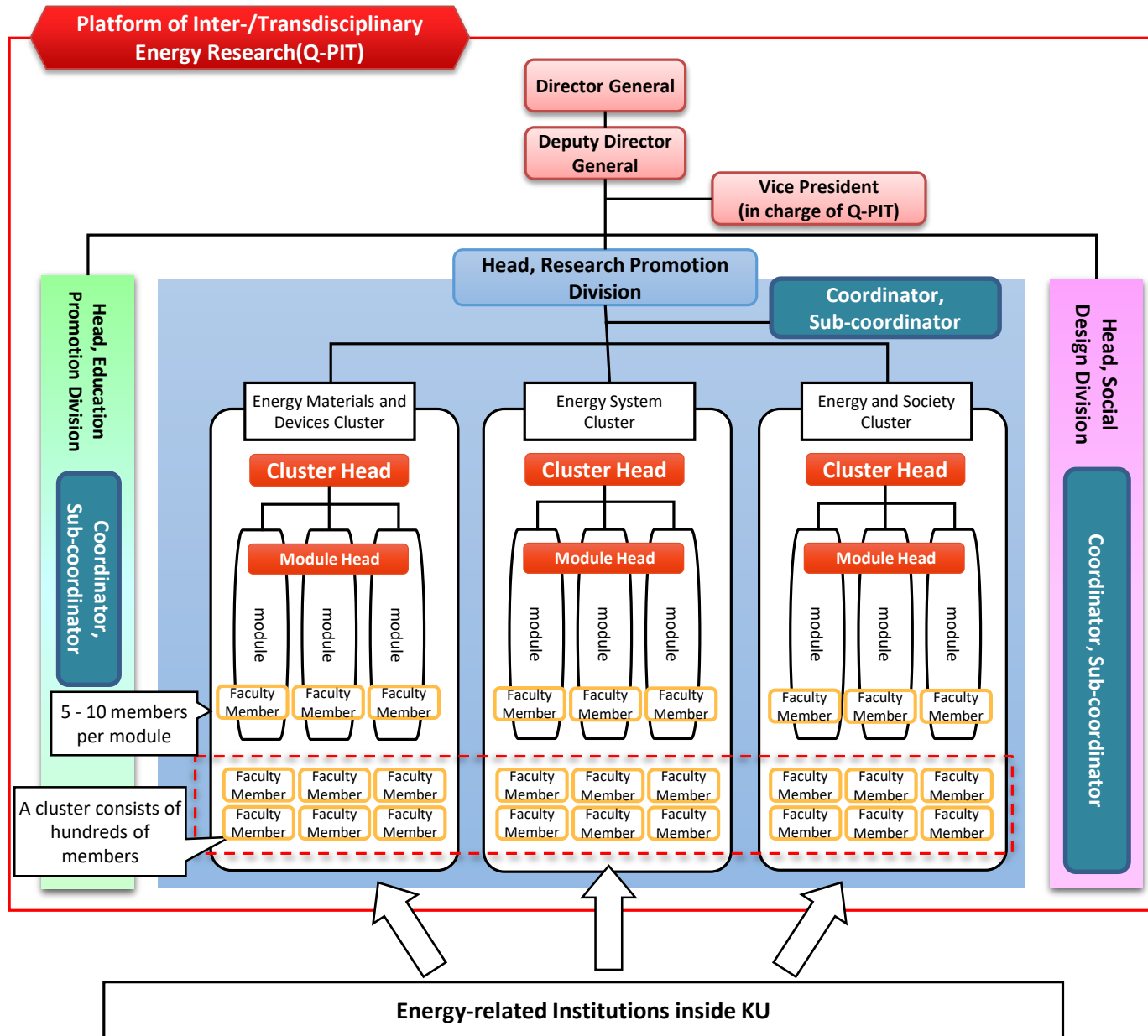


Reorganization of Kyushu University Platform of Inter-/Transdisciplinary Energy Research (Q-PIT)



KYUSHU UNIVERSITY



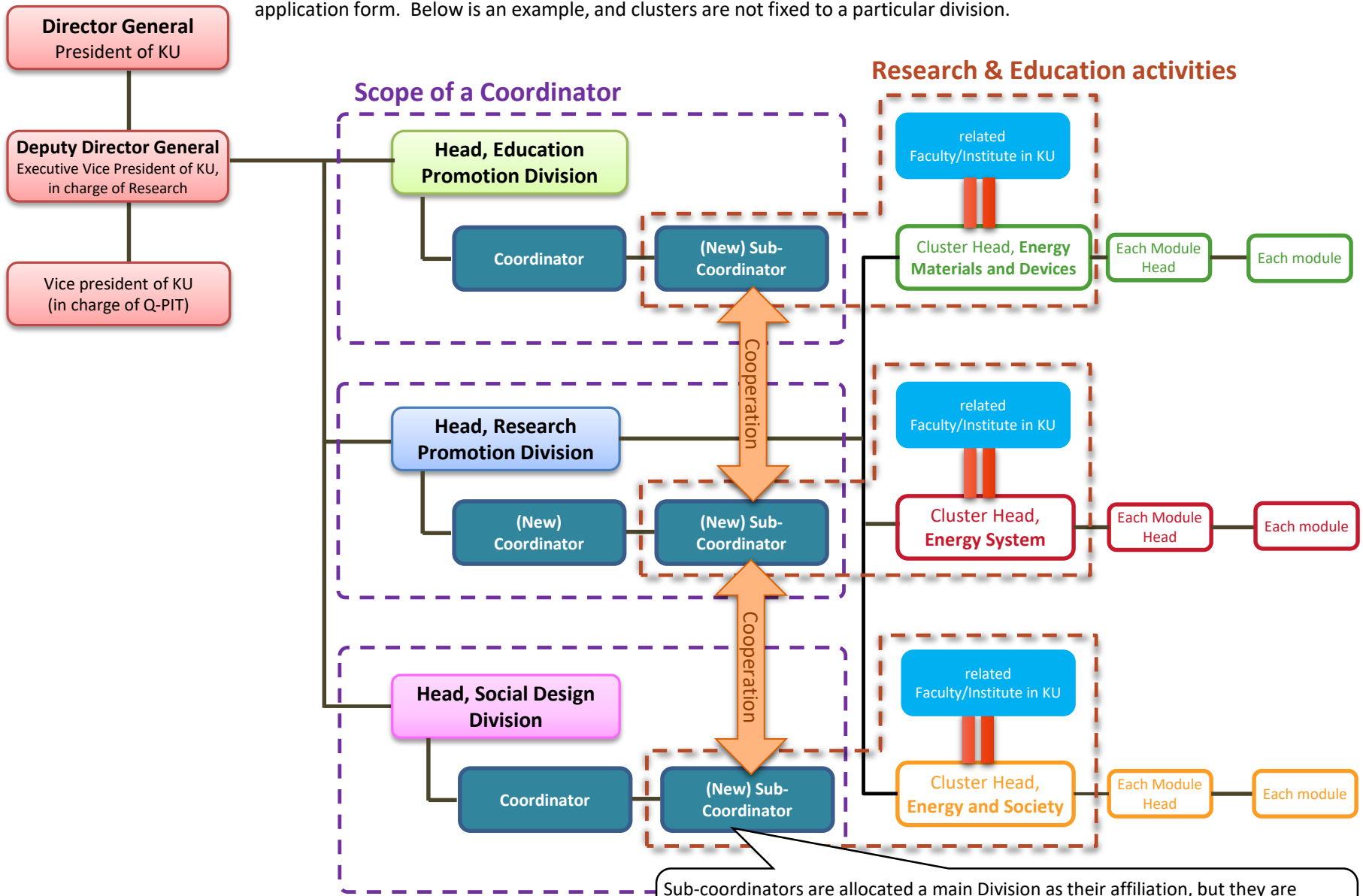


Divisions	Outline
<p>Education Promotion Division</p>	<ul style="list-style-type: none"> • To promote energy education programs in order to cultivate researchers to work cross-disciplinary • To survey, analysis of energy-related research • To support doctoral students in energy-related faculty with their research • Other work related to energy education
<p>Research Promotion Division</p>	<ul style="list-style-type: none"> • To promote cross-disciplinary and advanced energy research • To build up Q-PIT as a strong gateway in energy research fields • To establish interdisciplinary energy research teams • Public Relations on energy research outcomes • Other energy research-related work
<p>Social Design Division</p>	<ul style="list-style-type: none"> • To propose grand designs of a decarbonized society • To promote implementation of energy research outcomes • To liaise with industry and local governments to respond to their inquiries and consultations regarding energy research • To promote joint and contract research relating to energy fields • To work to solve social issues by energy research

Clusters	Main Research Areas
<p>Energy Materials and Devices</p>	<p>Kyushu University is working intensively on forging innovation to realize a carbon-free society and it cannot be achieved only by improving existing technologies. Research institutes need to take on challenges which make the impossible possible by developing innovative material and devices. This cluster aims to strongly promote cutting-edge material device research related to element technologies such as energy conversion, energy saving technology, and energy utilization. These are strong fields of Kyushu University, and we also press forward industry-academia-government collaborations.</p>
<p>Energy System</p>	<p>In order to change our society to carbon-neutral, we need to propose an innovative energy system including society-wide carbon and hydrogen cycling, and lead its social implementation. This cluster proposes innovative energy systems such as energy systems to accelerate the utilization of various renewable energies, energy systems involving carbon recycling, energy infrastructure for decarbonized societies, and next-generation mobility.</p>
<p>Energy and Society</p>	<p>Social change and behavioral change can only be realized when people in society fully understood the issues. In this cluster, we will propose an ideal future society, lifestyle, living environment, urban environment, and social design which take into consideration human sensibilities and well-being, as well as regional growth strategies and decarbonized society models. We will develop research to realize the environment and society which run on net-zero energy supported by decarbonization and the utilization of renewable energy, and build a model that achieves sustainable development and solves social issues.</p>

Position	Outline
Division Head	<p>Each division has a division head appointed by the Director General.</p> <p>[Main responsibilities] The division head assists the Director General and the Deputy Director General, and manages the division operation.</p>
Coordinator	<p>A coordinator is assigned to each division. A coordinator of the Research Promotion Division will be selected through the open recruitment. Faculty members from Q-PIT will be assigned to the other Divisions.</p> <p>[Main responsibilities] to coordinate division work in cooperation with the division head.</p>
Sub-coordinator	<p>Sub-coordinators work under each division coordinator and will be selected through the open recruitment.</p> <p>[Main responsibilities] To assist the division coordinator and coordinate division operation.</p>
Cluster Head	<p>A Cluster Head is appointed by the Director General and assigned to each cluster.</p> <p>[Main responsibilities]</p> <ul style="list-style-type: none">• To manage cluster operation.• To select “modules” to comprise the cluster with complete perspective of their research.• To give advice, guidance and allocate resources with mobility to cultivate modules.
Module Head	<p>A Module Head is assigned to each module to manage the module operation.</p> <p>[Main responsibilities]</p> <ul style="list-style-type: none">• To supervise the module and responsible for the activities of the module.• To manage resources allocated to the module (personnel costs and other costs) .

Note: The division to which a new member is assigned to will be decided based on their aspirations shown in their application form. Below is an example, and clusters are not fixed to a particular division.



Sub-coordinators are allocated a main Division as their affiliation, but they are required to cooperate with other sub-coordinators from other Divisions and work for the coordination of whole Q-PIT activities.